

NOAM HAZAN

ABOUT

FOUNDER & DESIGNER



NOAM HAZAN IS A TEL AVIV BASED FASHION HOUSE STARTED IN 2019 BY NOAM HAZAN, FOUNDER AND CHIEF CREATIVE OFFICER. HAZAN FOUNDED OUT OF A DESIRE TO PRESERVE AND GLORIFY TRADITIONAL HANDMADE KNITTING TECHNIQUES.

WITH THE INITIAL FOCUS OF CREATION, NOAM HAZAN OFFERS MODERN WARDROBE ESSENTIALS FOR WOMEN SEEKING A TIMELESS YET REBELLIOUS APPROACH TO EVERYDAY STYLE.

SINCE LAUNCHING IN 2019, NOAM HAZAN HAS BUILT A GLOBAL BRAND WITH COLLABORATION WITH HIGH-END BOUTIQUES AND RETAIL STORES LOCATED IN TOP CITIES AROUND THE WORLD AND MOSTLY IN THE US.

Noam Hazan



NOAM HAZAN



MILAN 46,000

CANVAS SHAPE BAG, KNITTED IN A SYMMETRICAL V TEXTURE WITH OUR NEW BUCKLE ATTACHED ON THE MIDDLE-FRONT. THE BAG HAS A LEATHER LINING SEWN ON THE INSIDE WITH AN INNER POCKET.

SIZE:
W - 22 CM/8.5 Inch, L - 17 CM/6.5 Inch D - 8 CM/3 Inch



STONE



OLIVE



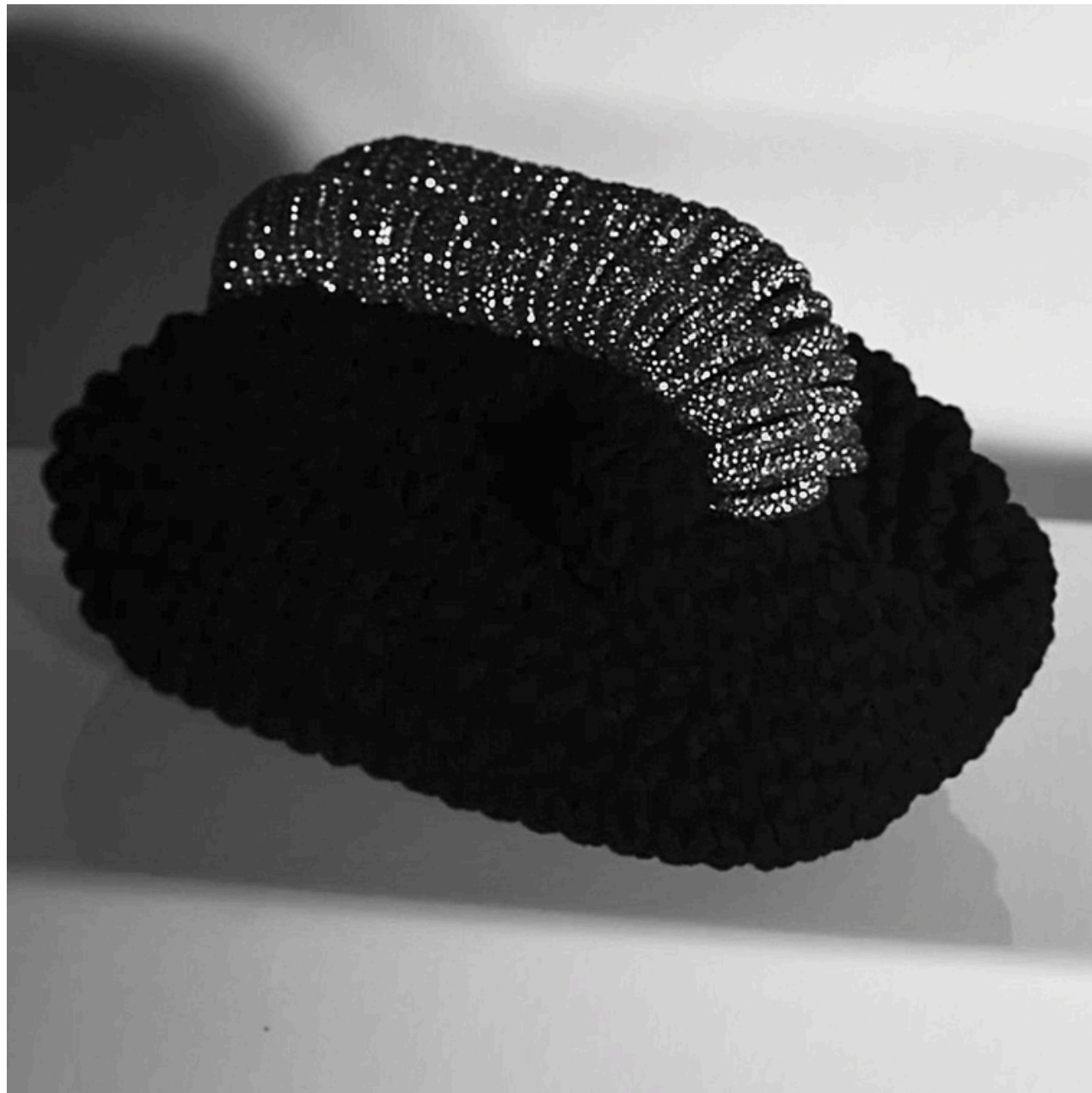
BLACK



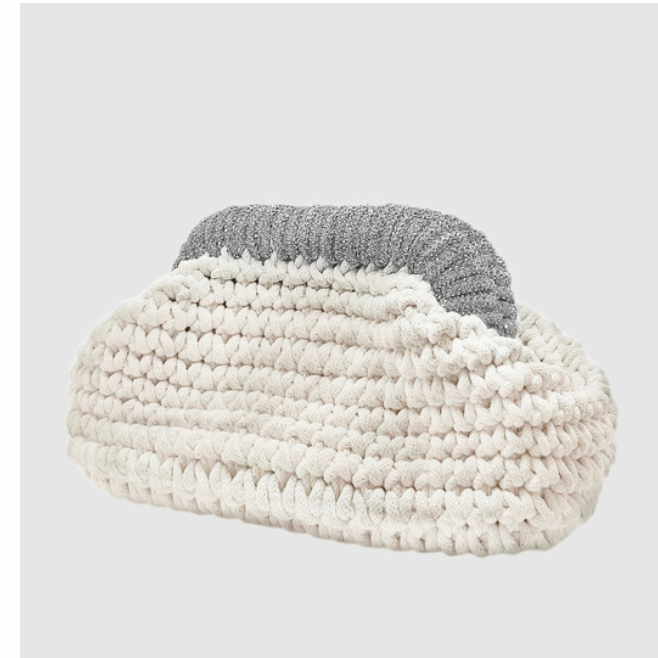
BLUSH



BLACK|STONE|BLUSH|OLIVE|PINK|ORANGE|FUCHSIA|GREEN|AQUA|CREAM



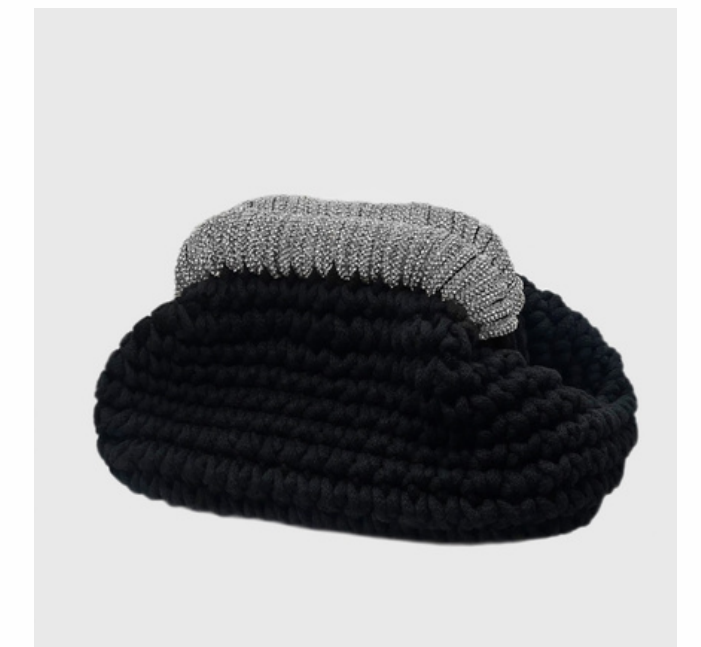
SIZE:
W - 26 CM/10.5 INCH, L - 16 CM/7 INCH D - 16 CM/7 INCH



CREAM SILVER



CREAM GOLD



BLACK SILVER

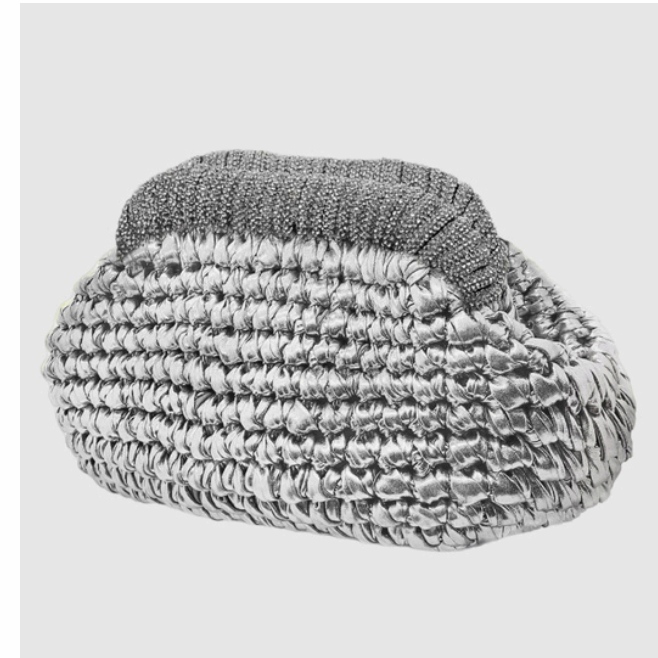
DÉSOR 42,000 チェーン付 46,000

THE DÉSOR BAG IS AN ELEGANT POUCH HANDBAG.
IT IS CROCHETED BY HAND AND CRAFTED FROM OUR OWN-MADE
COTTON YARN WITH AN ADDITIONAL RHINESTONE FINISHING.
THE BAG IS CARRIED BY HAND AND OFFERS MULTIPLE CARRY
OPTIONS.

THIS BAG IS AN UNMISSABLE ITEM THAT WILL MAKE YOU SPARKLE
EFFORTLESSLY. [VIEW HERE](#)



SIZE:
W - 26 Cm/10.5 Inch, L - 16 Cm/7 Inch D - 16 Cm/7 Inch



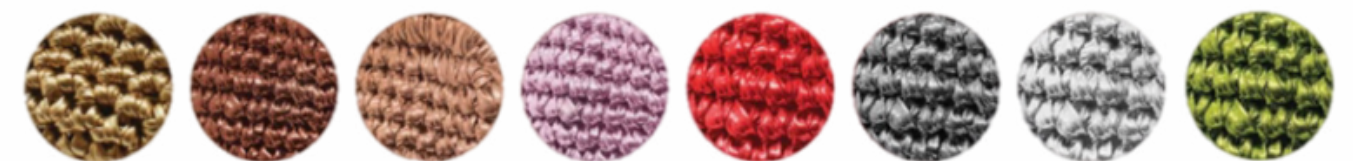
DOUBLE SILVER



BLACK SILVER

METALLIC DÉSOR 50,000 チェーン付 54,000

THE DÉSOR BAG IS AN ELEGANT POUCH HANDBAG. IT IS CROCHETED BY HAND AND CRAFTED FROM OUR OWN-MADE OWN-MADE LYCRA YARN WITH A METALLIC FINISH WITH AN ADDITIONAL RHINESTONE FINISHING. THE BAG IS CARRIED BY HAND AND OFFERS MULTIPLE CARRY OPTIONS. THIS BAG IS AN UNMISSABLE ITEM THAT WILL MAKE YOU SPARKLE EFFORTLESSLY.



GOLD|BRONZE|ROSE|PINK|RED|GUNMETAL|SILVER|GREEN|



METALLIC AMBER 32,000 チェーン付 36,000

THE AMBER BAG IS AN ELEGANT POUCH HANDBAG. IT IS CROCHETED BY HAND AND CRAFTED FROM OUR OWN-MADE LYCRA YARN WITH A METALLIC FINISH. THE BAG IS CARRIED BY HAND AND OFFERS MULTIPLE CARRY OPTIONS. THIS BAG IS AN UNMISSABLE ITEM, ESPECIALLY FOR THOSE WHO WANTS TO STAND OUT AND SHINE FROM DUSK TILL DOWN.

SIZE:
W - 26 Cm/10.5 Inch, L - 16 Cm/7 Inch D - 16 Cm/7 Inch



GOLD



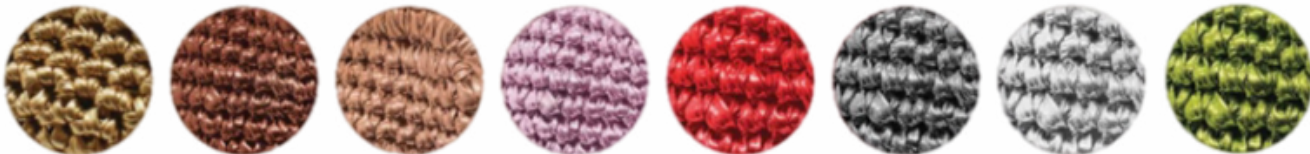
SILVER



GREEN



GUNMETAL



GOLD|BRONZE|ROSE|PINK|RED|GUNMETAL|SILVER|GREEN|



CHERRY 38,000 チェーン付 42,000

THE DESIGN WAS BORN FROM A DESIRE TO CREATE THE PERFECT CLUTCH BAG FOR EVERY OCCASION. THE CHERRY BAG IS AN ELEGANT POUCH HANDBAG. IT IS CROCHETED BY HAND AND CRAFTED FROM OUR OWN-MADE MATT PU LEATHER YARN. THE BAG IS CARRIED BY HAND AND OFFERS MULTIPLE CARRY OPTIONS.

SIZE:
W - 26 CM/10.5 INCH, L - 16 CM/7 INCH D - 16 CM/7 INCH



BLACK



BURGUNDY



RED



BEIGE



BLACK|RED|BROWN|BURGUNDY|BEIGE|ORANGE



LARGE SIZE CHERRY 54,000 チェーン付 58,000

THE DESIGN WAS BORN FROM A DESIRE TO CREATE THE PERFECT CLUTCH BAG FOR EVERY OCCASION. THE CHERRY BAG IS AN ELEGANT POUCH HANDBAG. IT IS CROCHETED BY HAND AND CRAFTED FROM OUR OWN-MADE MATT PU LEATHER YARN. THE BAG IS CARRIED BY HAND AND OFFERS MULTIPLE CARRY OPTIONS.

SIZE:
W - 38 Cm/15 Inch, L - 20 Cm/8 Inch D - 18 Cm/7 Inch



BLACK



BURGUNDY



RED



BROWN



BLACK|RED|BROWN|BURGUNDY|BEIGE|ORANGE



KATE 83,000

OUR FIRST ATELIER-CRAFTED PIECE,
MADE FROM 100% GENUINE LEATHER,
ALL HANDCRAFTED AND FINISHED BY HAND.
FEATURING A KNITTING-INSPIRED TEXTURE AND AN ELEGANT
EAST-WEST SILHOUETTE AND A STUNNING SUEDE LINING, KATE
IS A MODERN, SOPHISTICATED TRIBUTE TO THE ART OF
KNITTING, REIMAGINED USING CLASSIC ATELIER MATERIALS

SIZE:
W - 35 CM/14 INCH, L - 18 CM/8 INCH D - 8 CM/3.5 INCH



OLIVE



BURGUNDY



BROWN



BURGUNDY|BROWN|OLIVE



NOELLE 33,000

THE NOELLE BAG IS AN ELEGANT FLAP HANDBAG. IT IS CROCHETED BY HAND AND KNITTED FROM A DOUBLE-MIXED YARN TEXTURE. IT HAS COTTON LINEN SAWN FROM THE INSIDE WITH AN INNER POCKET, AND NH LOGO ATTACHED ON THE MIDDLE FRONT. THE BAG CAN BE CARRIED ON THE SHOULDER OR CROSS-BODY WITH A GOLDEN/SILVER SLIDING CHAIN.



BLACK

CREAM



YELLOW



TRÉS 33,000

HAND-TOTE SHAPED WITH A KNOTTED TOP HANDLE AND THE NEW NH GRITTIENESS LOGO CHAIN. TRÉS BAG HAS A DOUBLE LINING ON THE INSIDE WITH AN INNER POCKET.

SIZE:
W - 27 CM/10.5 INC, L - 18 CM/7 INCH, D - 8 CM/3 INCH



STONE



BLACK



BLACK|STONE|BLUSH|OLIVE|PINK|ORANGE|FUCHSIA|GREEN|AQUA|CREAM



ERIN 42,000

CANVAS SHAPE BAG, KNITTED IN A SYMMETRICAL V TEXTURE WITH OUR NEW BUCKLE ATTACHED ON THE MIDDLE-FRONT. THE BAG HAS A LINING SEWN ON THE INSIDE WITH AN INNER POCKET.

SIZE:
W - 20 CM/8 INC, L - 13 CM/5 INCH, D - 7 CM/3 INCH



METALLIC SILVER



METALLIC BLACK



KAIA 42,000

BUCKET SHAPE BAG, KNITTED WITH A NATURAL RAFFIA ROPE. THE BAG HAS AN INNER-REMOVABLE DUST BAG AND AN ADJUSTABLE LEATHER STRAP ATTACHED.

SIZE:
W - 20 CM/8 INC, L - 20 CM/8 INCH, D - 19 CM/7.5 INCH



TAN



BLACK



LOEISE 50,000

THE LOEISE BAG IS A CLASSIC BASKET BAG THAT GOES EASILY FROM CITY TO BEACH. IT IS CROCHETED BY HAND AND CRAFTED FROM NATURAL RAFFIA AND REAL LEATHER DETAILING WITH A TOUCH OF UNDERSTATED LUXURY. HANDLE CARRIED, THE BAG IS EASY TO WEAR, WITH ROOM FOR ALL YOUR VACATION ESSENTIALS.

SIZE:
W - 30 CM/12 INCH, L - 22 CM/8.5 INCH, D - 13 CM/5 INCH



DARK NATURAL RAFFIA
&
BLACK LEATHER
DETAILING



LIBI

THE LIBI BAG IS THE ULTIMATE MINIMALISTIC TOUCH FOR YOUR OUTFITS, DAY TO NIGHT. CRAFTED FROM PURE NATURAL RAFFIA AND CROCHETED BY HAND, THE BAG CAN BE CARRIED ON THE SHOULDER OR CROSS-BODY WITH A GOLDEN/SILVER SLIDING CHAIN.



MINI SIZE 34,000

W – 16 CM/6.2 INCH,
L – 15 CM/6 INCH,
D – 6 CM/2.4 INCH



MICRO SIZE 25,000

W – 12 CM/4.7 INCH,
L – 13 CM/5 INCH,
D – 5 CM/2 INCH



AMBER 33,000

THE AMBER BAG IS AN ELEGANT POUCH
HANDBAG.
IT IS CROCHETED BY HAND AND CRAFTED FROM
OUR OWN-MADE COTTON YARN.
THE BAG IS CARRIED BY CHAIN AND OFFERS
MULTIPLE CARRY OPTIONS.

SIZE:
W - 26 CM/10.5 INCH, L - 16 CM/7 INCH D - 16 CM/7 INCH



GREEN



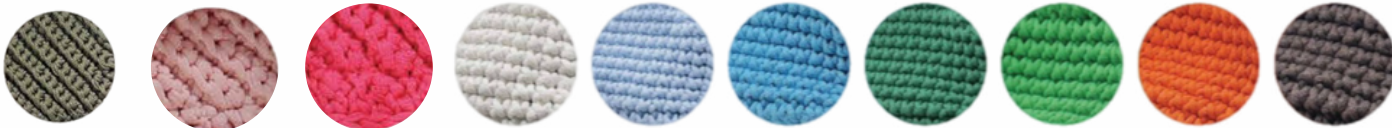
BROW



CREAM



ORANGE



OLIVE|PINK|FUCHSIA|CREAM|LIGHT BLUE|AQUA|GREEN|NEON|ORANGE|BROWN



THE TRAVEL BAG 67,000

THE TRAVEL BAG IS THE PERFECT SOLUTION FOR YOUR NEXT VACATION. A RECTANGLE SHAPED HAND CARRY BAG, CROCHETED BY HAND, MADE WITH A DOUBLE RAFFIA YARN AND BLACK CALFSKIN LEATHER. IT COMES WITH AN ADDITIONAL LEATHER CASE AND A PERSONAL CUSTOMIZED INITIALS TAG. THE BAG STANDS AS A CABIN BAG, ITS SIZE CAN EASILY FIT A WEEK'S WARDROBE SO YOU'LL ALWAYS BE READY FOR IMMEDIATE DEPARTURE.

SIZE:
W - 40 CM/16 INCH, L - 27 CM/11 INCH, D - 31 CM/12 INCH



NATURAL RAFFIA COLOR & REAL BLACK CALFSKIN LEATHER

ALL BLACK



CROC LEATHER BELT

ONE SIZE THIN BELT WITH SQUARE BUCKLE IN CROCODILE-EMBOSSSED LEATHER
ONE SIZE
DIMENSIONS: W - 2 CM , L - 100 CM
NICKLE / GOLD - TONED METAL HARDWARE
ADJUSTABLE BUCKLE CALFSKIN LEATHER
MADE IN ITALY



BLACK - SILVER



BLACK - DARK GOLD



BURGUNDY - SILVER