

NOAM HAZAN

## ABOUT

FOUNDER & DESIGNER



Noam Hazan has launched her brand in 2019 by in Tel Aviv. Noam began building the brand with the initial focus of creating a unique, colorful, and mostly creative handmade fashion bags, who can refer as art pieces. Each bag is designed by her, and it is all 100% handmade. The materials are chosen carefully by using the most high quality products with lots of attention to the little details. Trough the years, the collection has become a sensation in Israel, after launching our website and selling all of our stock in the first two days - until now days with a sold out drops every two weeks. In the last two years we started to ship worldwide and already shipped to over then 40 countries around the glob.

*Noam Hazan*





## MILAN

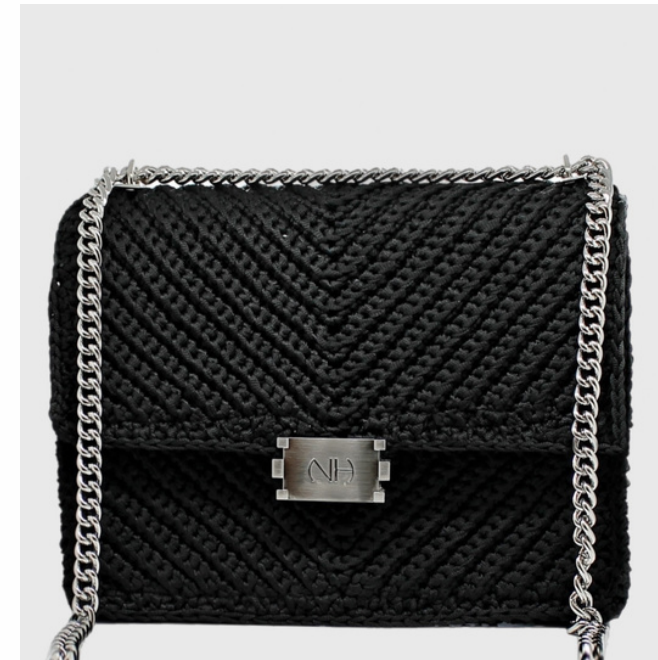
CANVAS SHAPE BAG, KNITTED IN A SYMMETRICAL V TEXTURE WITH OUR NEW BUCKLE ATTACHED ON THE MIDDLE-FRONT. THE BAG HAS A LEATHER LINING SEWN ON THE INSIDE WITH AN INNER POCKET.



STONE



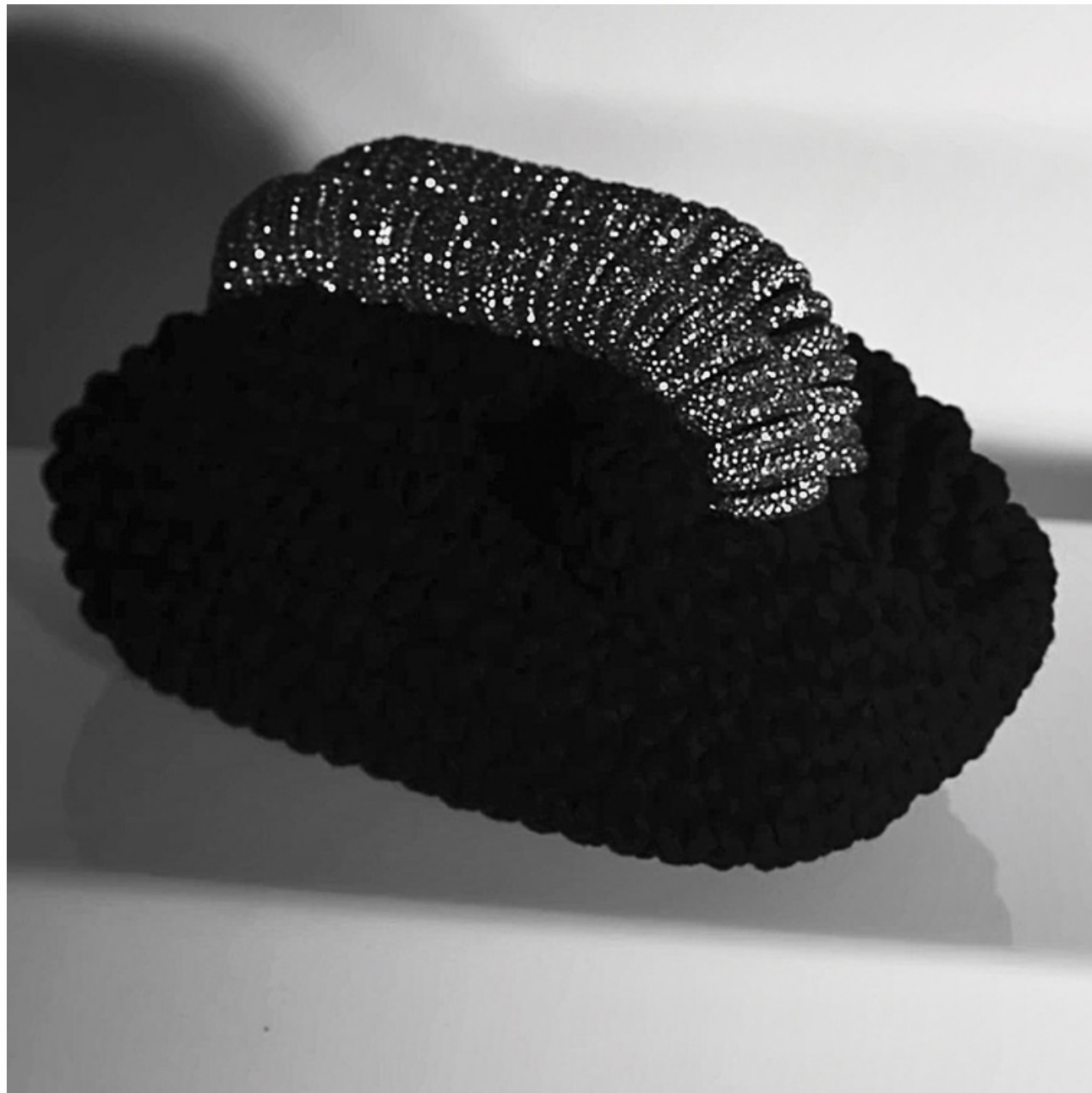
OLIVE



BLACK



BLUSH



## DÈSOR

POUCH SHAPE BAG, CLUTCH STYLE DESIGN, CLOSER CLIPS KNITTED BY THE INSIDE AND A CRYSTAL ROPE KNOTTED ON TOP.

THE LOGO BUCKLE IS ATTACHED TO THE INNER PART.



CREAM SILVER



CREAM GOLD



BLACK SILVER



## METALLIC AMBER

POUCH SHAPE BAG, CLUTCH STYLE  
DESIGN, CLOSER CLIPS KNITTED BY  
THE LOGO BUCKLE IS ATTACHED TO THE  
INNER PART.



GOLD



SILVER



GREEN



GUNMETAL



## CHERRY

POUCH SHAPE BAG, CLUTCH STYLE  
DESIGN, CLOSER CLIP KNITTED FROM THE  
INSIDE. PU LEATHER MADE.



BLACK



BURGUNDY



RED

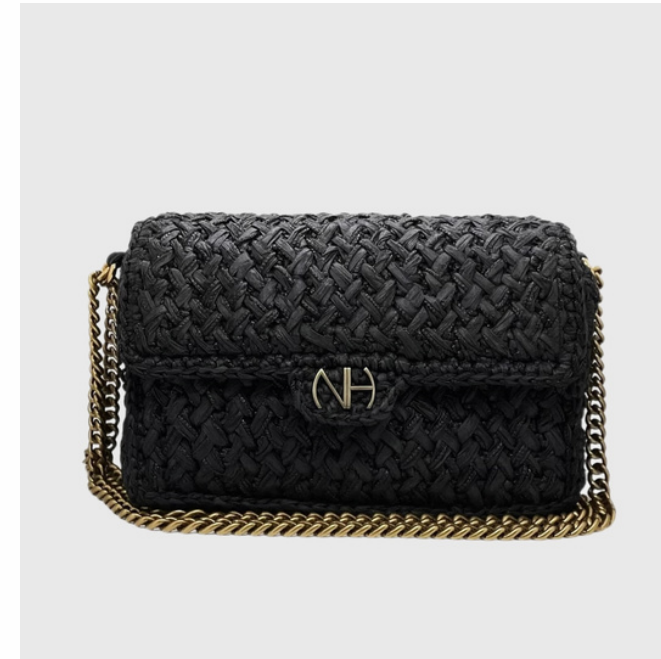


BROWN



## NOELLE

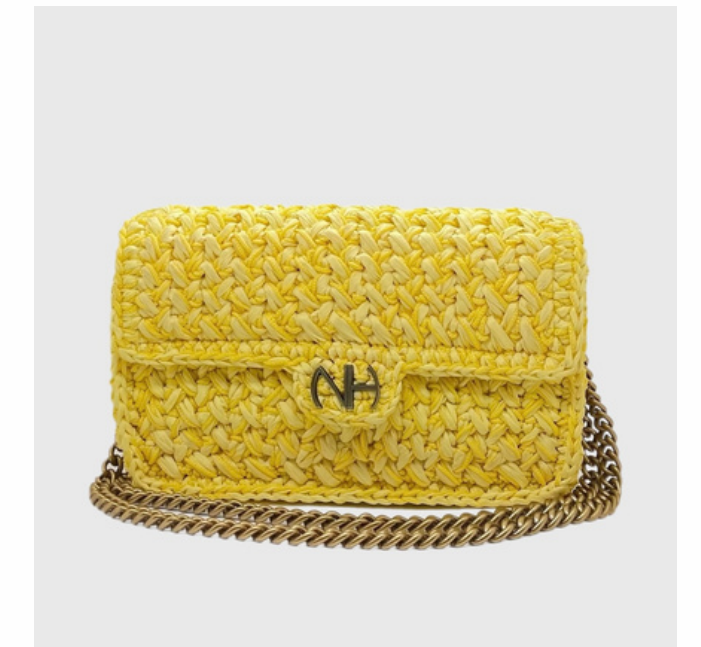
FLAP SHAPE BAG KNITTED FROM A DOUBLE-MIXED YARN TEXTURE. COTTON LINEN SAWN FROM THE INSIDE WITH AN INNER POCKET, A DOUBLE SIZE CHAIN AND OUR LOGO ATTACHED ON THE MIDDLE FRONT.



BLACK



CREAM



YELLOW



## TRÉS

HAND-TOTE SHAPED WITH A KNOTTED TOP HANDLE AND OUR NEW GRITTIINESS LOGO CHAIN.

TRÉS BAG HAS A DOUBLE LINING ON THE INSIDE WITH AN INNER POCKET FOR ALL OF YOUR PERSONAL ITEMS.



STONE



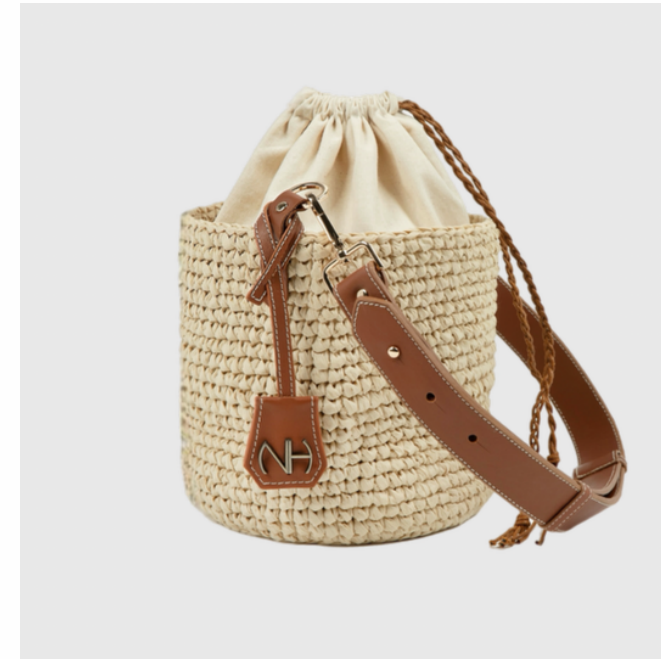
BLACK





## KAIA

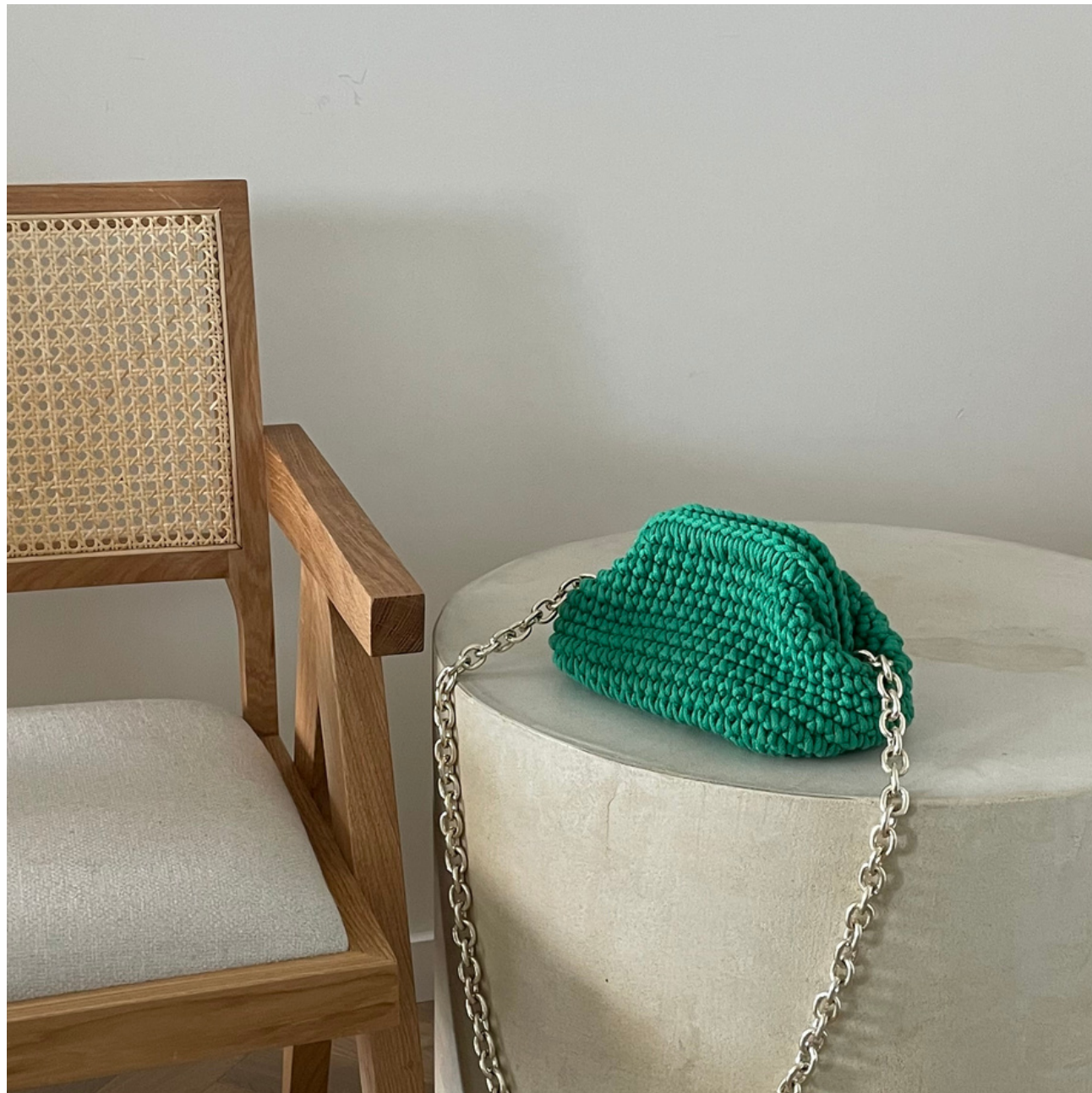
BUCKET SHAPE RAFFIA BAG WITH AN INNER  
DUST BAG AND AN ADJUSTABLE LEATHER  
STRAP ATTACHED.



TAN

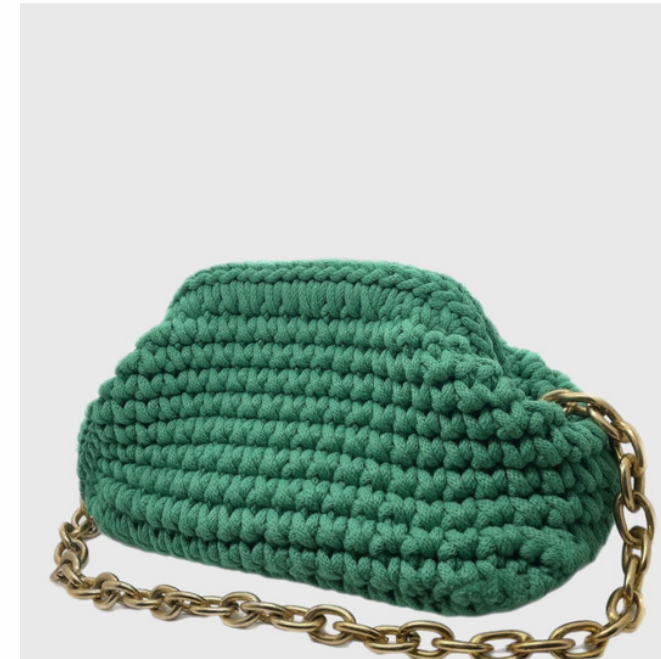


BLACK



## AMBER

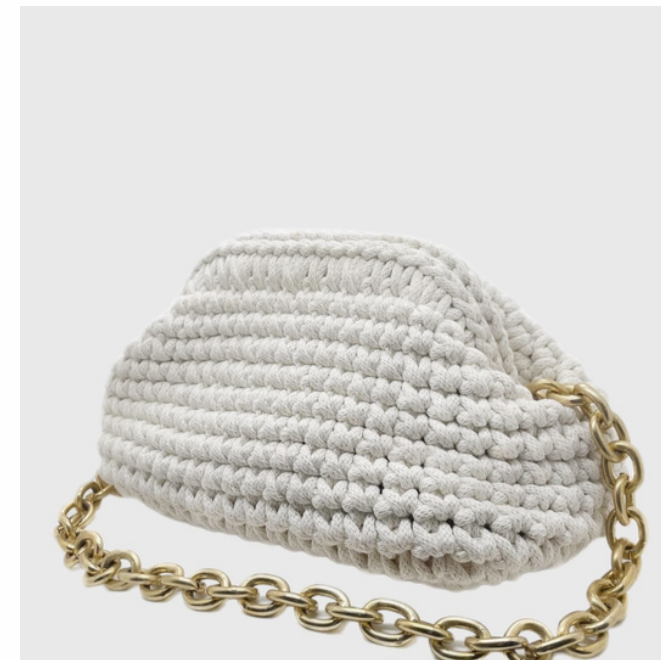
POUCH SHAPE BAG, CLUTCH STYLE DESIGN, CLOSER CLIPS KNITTED BY THE INSIDE, AND A CRYSTALS STONES LINE KNITTED ON TOP. THE LOGO BUCKLE IS ATTACHED TO THE INNER PART.



GREEN



BROW



CREAM



ORANGE



## THE TRAVEL BAG

A RECTANGLE SHAPE HAND CARRY BAG MADE WITH A DOUBLE RAFFIA YARN AND BLACK CALFSKIN LEATHER.

THE PERFECT CABIN BAG SIZE THAT CAN EASILY FIT A WEEK'S WARDROBE SO YOU'LL ALWAYS BE READY FOR IMMEDIATE DEPARTURE.



NATURAL RAFIA COLOR & REAL BLACK CALFSKIN LEATHER